

**CURRENT PRACTICE**  
**INSIGHTS** into

**PATIENT**  
**HEALTHCARE**



  
**PHARMO**

# An experienced sparring partner for all your EU healthcare questions

Patient-centric data derived from real-life healthcare settings is a key element in generating evidence for decision-making by healthcare stakeholders. Our clients use this evidence to demonstrate safety, effectiveness and quality of care. PHARMO is specialised in generating this evidence, by means of observational research with data from current treatment practice. We provide expert data analysis to support regulatory, market access and treatment decisions throughout a product life-cycle.

## Tailor-made Data Research

PHARMO is an independent scientific research company that offers tailor-made data research, consultancy and IT solutions to assist our clients in their decision-making. We perform risk/benefit assessment of drugs such as EMA-driven post-authorisation studies, and we support health outcomes, health economics, market access, and disease management strategies. We lead European studies to provide critical evidence in the context of emerging standards for study design, database and analysis operations, and quality assurance in Europe.

## PHARMO in Europe

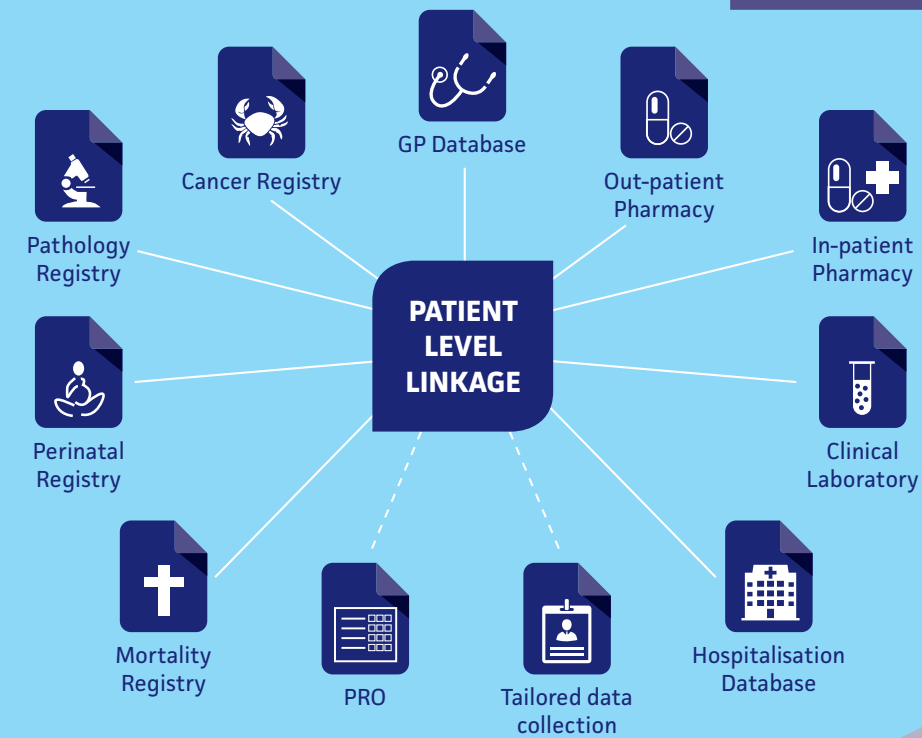
### Collaboration with partners in:

- UK
- Germany
- France
- Italy
- Spain
- Denmark
- Norway
- Sweden
- Finland



## PHARMO in The Netherlands

**PHARMO Database Network**  
Rapid access to primary and secondary healthcare data



### Database Network

PHARMO collects patient-centric data and maintains a network of databases. This network enables the follow-up of more than 4 million residents of a well-defined population in the Netherlands for an average of ten years. The data are derived from primary and secondary healthcare settings.

Our tailor-made and disease specific cohorts are based on the cradle to grave principle. Individual medical information is even available from before birth. Through linkages with various healthcare databases, we can create a complete profile of a person's medical history throughout their life, giving a complete overview of a patient's journey. If required, we collect additional patient data, by reaching out to the treating physicians, or by involving patients in reported outcomes studies. As an addition to our core databases, we are developing IT tools for the collection of additional data in the context of patient-reported outcomes (PRO), or in current practice trials in the GP setting.

### Collaboration with European Database Partners

PHARMO has delivered its tailor-made services for more than 600 late-phase studies across a wide range of therapeutic areas in the last 15 years, including diabetes, cardiovascular disease, respiratory disease, mother and child health, and oncology.

We are continuing to expand our capabilities in Europe by collaborating with European healthcare database partners.

### Experienced Partner for Healthcare Questions

By doing your business with PHARMO, you have quick access to a broad patient-centric database network to deliver research studies reflecting real-life practice. In PHARMO, you have an experienced sparring partner for all your European healthcare questions. We are happy to share our specialist knowledge with you to assist you in your decision-making.

